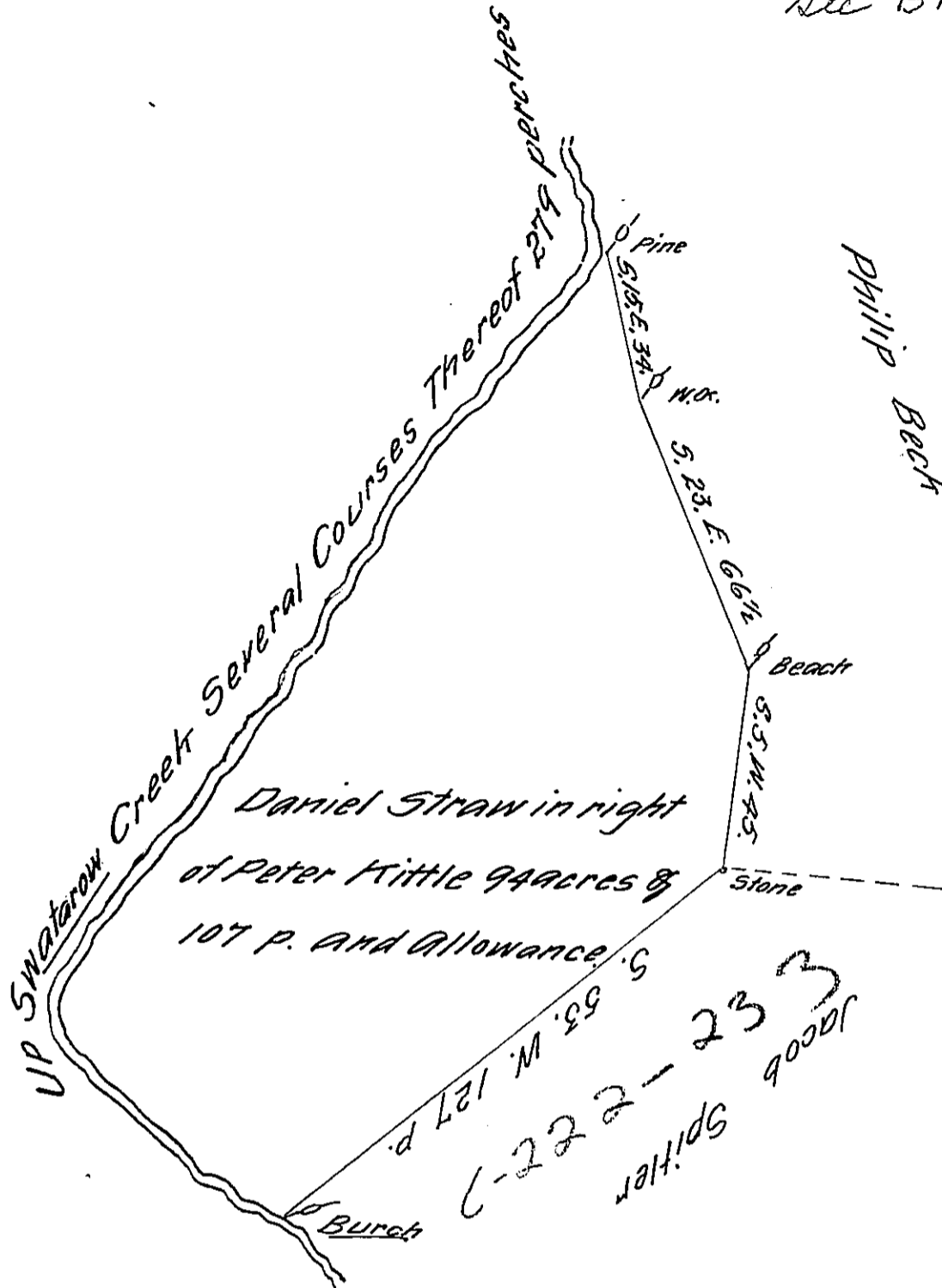


See B13-145+098-207



By Virtue of a Warrant Dated the fifteenth day of June 1753 Surveyed the 10<sup>th</sup> day of May 1786. To Daniel Straw in Right of Peter Kittle the Above Described Tract of Land Situate in Bethel Township (Late Lancaster) County Containing Ninety four Acres & 107 perches & Allowance of six p. Cent for Roads &c.

Thomas Clark D.S.

To John Lukens Esquire  
Surveyor General of Pennsylvania

IN TESTIMONY that the above is a copy of the original remaining on file in the Department of Internal Affairs of Pennsylvania, made conformably to an Act of Assembly approved the 16th day of February, 1833, I have hereunto set my Hand and caused the Seal of said Department to be affixed at Harrisburg, this ninth day of August 1911.

*Henry Howell*  
Secretary of Internal Affairs.